

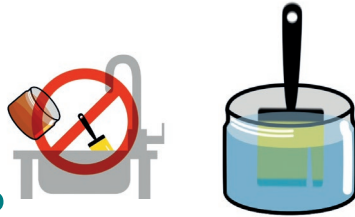
# Washing instructions for painting supplies

1.



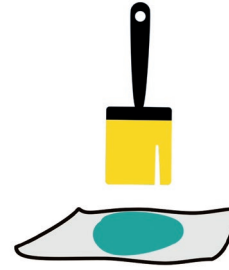
Wipe off the excess paint on the rim of a paint can, paper towel or newspaper, for example.

2.



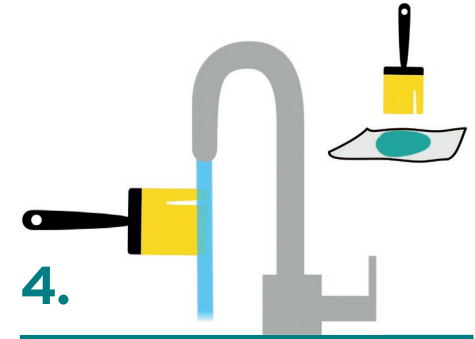
Soak the brush in a separate container. **Do not wash under the tap!**  
**For water-borne paints** water is sufficient. Brushes can also be washed in paint brush cleaner.  
**Solvent-borne paint** needs to be washed in paint brush cleaner (solvent).

3.



After that, wipe the remaining paint from the brush on a paper towel or newspaper.

4.



**Water-borne paint:** After soaking, rinse the brush under the tap.  
**Solvent-borne paint:** Allow the tool to dry after cleaning it with solvent.  
**Do not wash under the tap!**

5.



Let the remaining paint form a precipitate at the bottom of the container.

6.



**Soaking in water:** When the precipitate has separated from the water, you can pour the water down the drain.  
**Solvents and brush cleaners:** Do not pour such liquids down the drain. If the detergent (including solvent) is clear and separated from the paint, it can be reused.

7.



**Water-borne paint:** Dry precipitate can be disposed of as mixed waste. Take wet precipitate and liquid containing brush cleaner...  
**Solvent-borne paint:** Take precipitate and unneeded cleaning liquids...

8.



... to a **hazardous waste** collection point in a sealed container. Remember to label the contents of the container.  
**Do not pour solvent waste down the drain!**

# Before surface treatment

You can save the Baltic Sea and the environment from harmful substances. Check in advance the practices for cleaning tools and sorting waste. With these guidelines, harmful chemicals will not end up polluting bodies of water or causing other damage.

## Product selections

Eco-labelled products are the best environmental choices in their product group.

- Select products that are eco-labelled
- Favour products manufactured in Finland and the EU

## Cleaning tools

- Clean your tools right after using them. If you are going to continue working the next day, put the tools in a plastic bag and close it tightly.
- Always wash brushes and paint rollers in a separate container. Instructions for washing tools and sorting waste depend on whether the paint used is water-borne or solvent-borne.

## Hazardous waste

- Take paints, varnishes, solvents and oils to a hazardous waste collection point.
- Wet painting supplies, washing fluids containing paint brush cleaner and wet precipitate are hazardous waste. Precipitate from solvent-borne paint is also hazardous waste when dry.
- Check the product label for the composition. Most wood oils are natural products. However, the oils may contain solvent, which is hazardous waste.
- Oily rags
- What to do at a collection point: [hsy.fi/en/hazardouswaste](https://hsy.fi/en/hazardouswaste)
- You can find your nearest collection point at: [www.kierratys.info](https://www.kierratys.info)

## Disposing of paint supplies

Unusable, dried and hardened paint supplies can be disposed of as mixed waste.

A dry paint roller can be sorted as mixed waste, but a wet one is considered hazardous waste.

## Oily rags

Rags with oil on them can catch fire when the oxygen in the air reacts with the oil. Spontaneous combustion can occur even after several hours.

- » Wet oily rags in water and seal them in a container before disposal.
- » The wetted rags must then be taken to a hazardous waste collection point in the closed container. Remember to label the contents of the container.